



Products Gallery

Qingdao Huuayihe New Material Co.,Ltd

Contact: Magic Zhong

Tel: 0086 13210083109

What we have

01

Steel
Buildings

02

container
houses

03

Light
Steel Villa

04

Capsule
Home



Steel Buildings

Use

Steel structure buildings can be used as warehouse, workshop, industry buildings, poultry, ect. Can meet a variety of activities, productions use.

Advantages

High construction efficiency;
100% recycling materials;
Solid structure;
Economical and practical;
Easy to assemble...

Materials

Steel frame, purlin
panels, ridge Tile, panel accessory
Doors, windows, canopy
Bolts, Screws

Packing & Installation





Steel Buildings

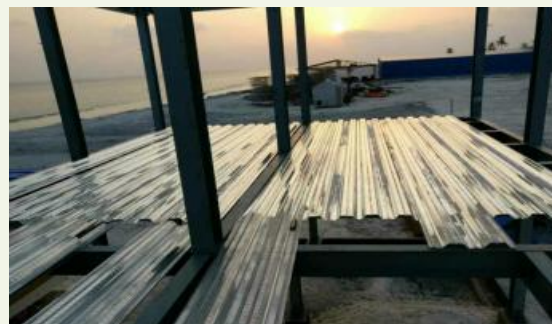
Warehouse case:

Country: Indonesia

Size: L12m*W20m*H18m

Materials: steel frame, sliding door, Lighting strip,
steel composite panel

what we do: Design, production, packing, clearance for export



Steel warehouse



Country: Senegal
Size: L60m*W30m*H8m
Materials: steel frame,
sliding door, Lighting
strip, steel single panel



Container Houses



What you can choose:

Sizes: L2900mm*W2250mm*H2800mm; L5900mm*W2250mm*H2800mm; L5900mm*W3000mm*H2800mm; L1180mm*W2250mm*H3000mm

Color: wall- white/grey/yellow/orange/others colors & Flooring colors

Flooring materials: wooden/PVC/plastical/Tiles

OR you have your design, pls let us know.



Foldable houses



Advantages: Low cost, Easy installation; Short construction period

Size: 3000mm*2460mm*2510mm/ 5800mm*2460mm*2510mm



Expandable houses



Size in folded: L5900mm*W730mm*H2500mm

Size expand: L5900mm*W4900mm*H2500mm

Can be equipped with water supply and drainage system, power distribution system, kitchen, toilet. Popular to be used as home, offices.



Prefab houses



Sizes accept customization

Can be used as home, offices, dormitory, warehouses, ect.

Lower cost & Easy to assemble and disassemble

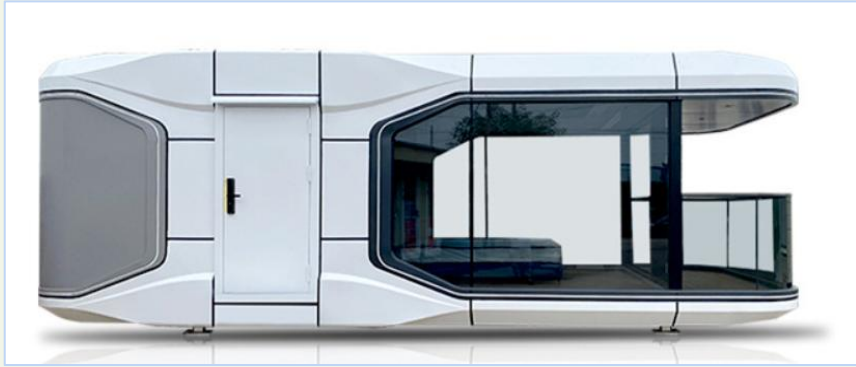
Light steel Villa

The **light steel villa buildings** adopt standard design, factory production and modular assembly. The frame adopts light steel keel system. Has **advantages** like: Safe and durable, light in weight, high degree of prefabrication, practical and comfortable, energy saving and environmental. **Can be used** as buildings of scenic spot for management construction-administration office/visitor service center.ect, Buildings of agricultural tourism construction, entertainment building construction, residential buildings like villa/office/dormitory, buildings of public places for school/hospital/house ect.





Space Capsule



The space capsule is a prefabricated building for people to use for leisure and entertainment or accommodation in outdoor attractions. It consists of steel structural frame and aluminum exterior panels, acrylic glass etc.

Advantages: Factory prefabrication, Convenient installation, Intelligent manufacturing, quality design, Move-in with bags.



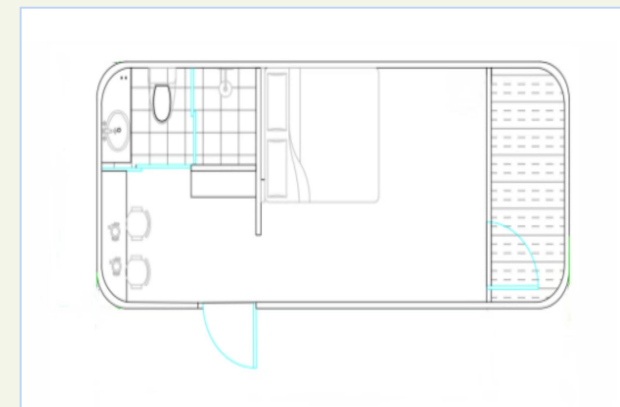
Space Capsule



Outside



Internal



Drawing

Size:

L8.5m*W3.3m*H3.2 26.4sqm

L11.5m*W3.3m*H3.2 38.0sqm



Apple Cabin



The apple cabin is popular to be used as office, home, hotel ect. Variable combination and easy movable.

Size in 11.5m*2.2m*2.4m, can be customerized but cannot be bigger for 40ft container loading.

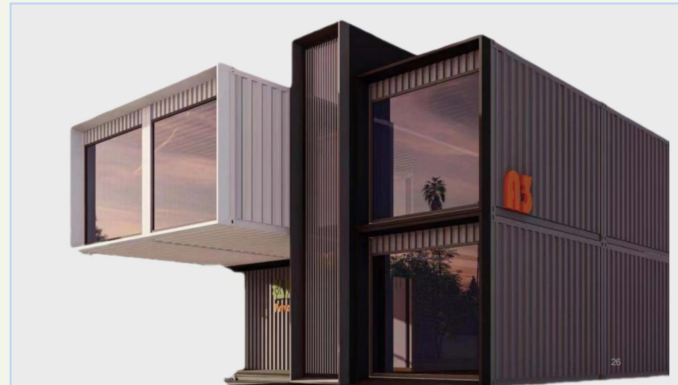


Package & delivery



Composite container

Can be customized & Flexible spatial combination & low cost & easily assemble or disassemble & movable & prefabricated and modular assembly



What we can do

